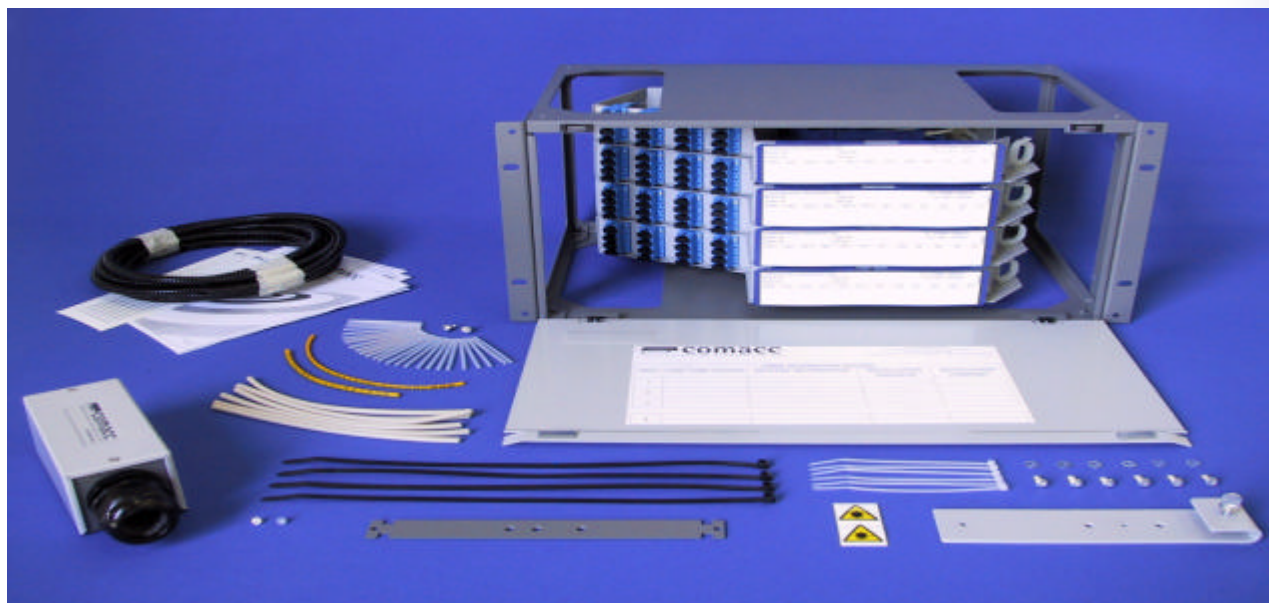


Pivoting Optical Subrack

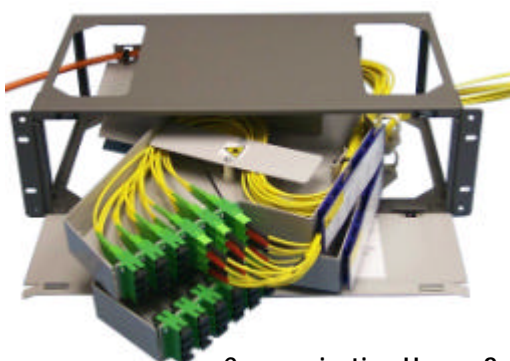


The pivoting optical subrack is a flexible solution for both patching and splicing which can be configured to customers' specific needs. The subracks have been designed to give ease of access to reduce installation and maintenance time. Splicing can be achieved without removing the unit from the cabinet and patching the fibres requires only a limited movement of the drawer.



The subrack can be supplied with either metal or LSZH engineering polymer drawers which can accommodate up to 32 fibres depending on the connector selected and each unit is supplied with an installation recommendation.

Larger subracks up to 7U are available and each chassis is supplied with combination brackets which fit both 19" and ETSI practice racks. All subracks are fabricated from a mild steel and aluminium alloy and powder coated for a durable finish.



Formats

3U	4U
<ul style="list-style-type: none"> • 32F 2 Drawer (16F/DWR) Connector type FC-ST • 48F 2 Drawer (24F/DWR) Connector type SC-E2000 • 48F 4 Drawer (16F/DWR) Connector Type SC-E2000 	<ul style="list-style-type: none"> • 48F 3 Drawer (16F/DWR) Connector Type FC-ST • 72F 3 Drawer (24F/DWR) Connector type SC-E2000 • 72F 6 Drawer (12F/DWR) Connector type SC-E2000
5U	7U
<ul style="list-style-type: none"> • 64F 4 Drawer (16F/DWR) Connector Type FC-ST • 96F 4 Drawer (24F/DWR) Connector type SC-E2000 • 96F 8 Drawer (12F/DWR) Connector type SC-E2000 	<ul style="list-style-type: none"> • 96F 6 Drawer (16F/DWR) Connector type FC-ST • 144F 6 Drawer (24F/DWR) Connector type SC-E2000 • 144F 12 Drawer (12F/DWR) Connector type SC-E2000

Communication House, Springwood Industrial Estate, Braintree, Essex. CM7 2GB

Tel: +44 (0) 1376 334885 Fax: +44 (0) 1376 334883 e-mail: comacc.sales@tycoelectronics.com