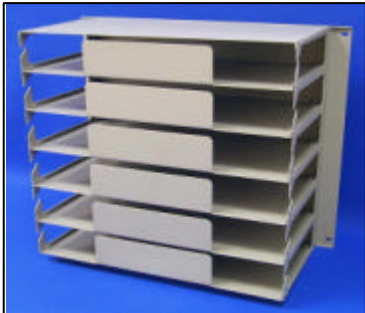


Slack Fibre Managers

Comacc offers a number of solutions which tackle the problems of overlength cables:

Cable Slack Manager

The cable slack manager is rear mounted using standard fixings in a TEP-1E cabinet. There are additional fixings provided for Comacc's ETSI Style ODF. It has the capacity to store up to 12 metres of excess Hydra cable (typically 9mm in diameter) in each of the compartments. Available with 1 – 6 storage shelves.



1U Patchcord Storage

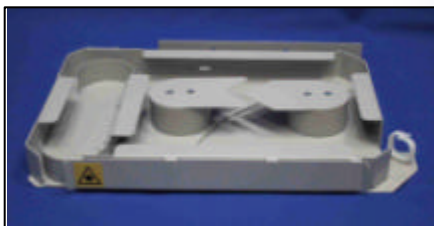
The rack mounting patchcord storage unit will fit 19" or ETSI racks. The tray will store up to 16 x 2.0m overlength ruggedised cords. The drawer pivots for ease of access and a lid protects the stored fibres.



FMD Patchcord Storage

The rear mounting patchcord storage drawer will fit the Comacc OFDM and ETSI Style ODF Rack.

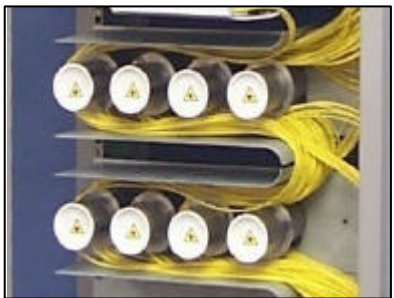
The tray will store up to 16 x 2.0m overlength ruggedised cords. The drawer pivots for ease of access.



Shelf Slack Manager

Rear mounting modular Units for effective management of patch cords are provided for used with Comacc's ODF products.

This product can also be used in a Cross Connect configuration to enable one length of patch cord to make all possible interconnections.



19" Cabinet Jumper Ring

Moulded Jumper ring to fit cage nut apertures within 19" and ETSI racks offer patchcord management to tidy existing racks.

These are particularly useful in heavily populated equipment racks.

